



January 2024

Dear Friend,

Education and opportunity have the power to change the lives of young people. For the past 68 years, Nativity BVM High School has prepared students for success in life enriching them through formation of faith, outstanding academics, community service, social responsibility, cultural appreciation and athletic development.

Nativity continues to exemplify the essentials of academic excellence and affirms the traditional life values of Christianity in Catholic faith. Our school community thrives on shared values that celebrate our differences and the unique gifts God has given us. We ensure that every student, parent, faculty, staff and Nativity community member who walks through our doors is part of a caring environment of acceptance, support, and achievement.

Our history here at Nativity is strong; those who came before have molded the very foundation that we stand on so firmly today. We personally are so thankful for the incredible men and women that came before us, and are privileged to have the opportunity to further the work that they began. To continue Nativity's mission in ways that pay tribute to those who have led and inspired us, we have engaged in a process of exploring a course for our future to ensure sustainability for generations to come.

Our Capital Campaign, *Preserving a Legacy of Faith & Family*, was created in partnership with many Nativity community members, including our Campaign Cabinet which is listed in the included proposal. This campaign will guide our path forward by raising monies to fund three priorities: (1) Faculty and Staff Development and Retention, (2) Campus Facilities, and (3) Tuition Assistance. Further details on the campaign priorities are found within the literature included with this letter.

We share our strategic campaign plan with enthusiasm, an eagerness to get to work, and gratitude for our entire community. *Preserving a Legacy of Faith & Family* is an ambitious plan, but with the support of our community, we are excited to embark on this important work!

With gratitude,

Lynn Sabol
Principal

Jennifer Daubert
Development

William E. Kirwan, Esq., CPA
Chairman, Nativity Governance Board



Education with a Different Spirit

Nativity BVM High School has been providing Christ-centered education to students for over six decades. The school first opened its doors to students in September 1955. Today, we continue to equip our graduates with the tools they need to tackle life's challenges.

At Nativity, we are blessed to provide a secure, disciplined and tight-knit environment for students to thrive academically and spiritually. Our community fosters growth and encourages students to discover their unique talents, preparing them to excel in a constantly changing global landscape. Known for academic excellence, Nativity is the ideal place for young men and women to achieve their full potential.

To ensure that Nativity remains sustainable for generations to come, the school's leadership has been carefully analyzing the needs of our students, staff, faculty, and the larger community. Our dedicated Campaign Cabinet, identified on the last page, has played a crucial role in shaping our strategic campaign vision, and we are thrilled to announce that Nativity BVM High School will embark on a capital campaign to address those identified needs.

Sustaining Nativity for Future Generations

This Nativity sustainability initiative is an essential effort that seeks to ensure the long-term success of the school. Nativity's fundraising target of \$5 million is an ambitious goal that strives to generate the financial resources needed to sustain operations for future generations. The monies raised through this campaign effort will benefit:

Faculty and Staff Development & Retention

Attract, develop and retain the best educational community.

Campus Facilities

Update and maintain our campus facilities.

Tuition Assistance

Providing students with a top-quality education at a reasonable cost.

The *Preserving a Legacy of Faith & Family* campaign will help Nativity maintain a balanced budget, even during periods of economic uncertainty when other sources of funding may be unavailable.

The campaign's priorities are vital, as they will keep Nativity competitive and relevant in the decades to come. By providing a high-quality education, Nativity can attract more students and continue to serve the community as the primary source of secondary Catholic education. Additionally, by retaining talented teachers, the school can maintain a high level of teaching quality and ensure that students receive the best possible education. Maintaining and updating, as necessary, the facilities that God has given will avoid costly deferred maintenance that impacts the safety, security and health of those we serve.

Overall, the Nativity sustainability campaign is a crucial undertaking that will benefit the school, students, staff, faculty and the overall community for generations to come. The fundraising goal of \$5 million may seem daunting, but with the support of the community, it is achievable. By contributing to this important effort, individuals can help Nativity preserve our legacy and remain a thriving Catholic institution that provides students with an excellent education.

Preserving a Legacy of Faith & Family Capital Campaign

Since August 2023, school leadership, the Nativity Governance Board and the Campaign Cabinet have been hard at work on the *Preserving a Legacy of Faith & Family* campaign. Behind the scenes, our Campaign Cabinet (comprised of alumni, parents, and Nativity supporters) has been heavily involved in guiding our conversations, developing literature, and crafting messaging to promote the objectives of this campaign. We are grateful for their leadership, and could not do it without them.

Our campaign is presently in the "silent" phase, and we are actively engaging with key Nativity stakeholders to share our objectives and secure initial donations to support the success of the campaign. In Spring 2024, we will officially launch the *Preserving a Legacy of Faith & Family* capital campaign to the broader Nativity community. At that time, we plan to announce the amount raised during the silent phase to inspire and motivate others in the community to participate.

All funds will go through the Nativity Preservation Support Foundation (NPSF), which was organized by local volunteers as well as business and professional people within our community, who are dedicated to preserving Nativity BVM for all future generations of Schuylkill County. This foundation is a non-profit organization that is an entity separate and apart from the Diocese of Allentown and will be used now and in the future only for the benefit of Nativity.

Our Request

We appreciate your time and consideration in reviewing the information provided on the *Preserving a Legacy of Faith & Family* capital campaign. We believe that our campaign will make a significant impact in the Nativity community, and we hope that you share our vision!

We understand that making a financial contribution is a significant decision, and are appreciative for any support you can provide. **We would be grateful for your prayerful consideration of a gift or pledge to help us achieve our goals.** This commitment, or one at any amount, will bring us closer to making a positive change in our community.

We want to make the giving process as easy and convenient as possible for you, which is why we offer the option to allocate your contribution in many ways over multiple years. Your flexibility allows you to support our campaign in a way that suits your financial situation and preferences.

To help you navigate the giving process, we have included a campaign commitment form in your proposal. This form outlines the different ways in which you can allocate your contribution. If you have any questions or need further assistance, please do not hesitate to reach out to us. We are happy to help and provide any additional information you may need.

Thank You

We are excited about the progress we have made so far, and we are even more excited about what is to come. With the support of our community, Nativity can continue to make a real difference in the lives of our students and their families, providing Catholic education in Schuylkill County. Thank you for your consideration!

Preserving a Legacy of Faith & Family Campaign Cabinet Members

Mr. Robert Allen*

Rev. Kevin Bobbin, Nativity Chaplain*

Mrs. Carol Boyer

Mr. John Boyer*

Atty. Paul Datte*

Mrs. Jennifer Daubert, Development

Mr. Edward Donahue

Mr. Sonny Fenstermacher*

Ms. Karen Ferenchick, NPSF Treasurer*

Mr. Michael Grabowski, Dean of Students

Mr. William Kirwan, Chairman, Nativity Governance Board

Mr. PJ Lechleitner

Mrs. Michelle Lewandowski*

Atty. Alvin B. Marshall*

Dr. Augustine (Gus) Moffitt

Mr. Maury Molin

Dr. Jerry Powers

Mrs. Allison Miller Prezelski

Mr. William Reppy*

Rev. Philip Rodgers*

Mr. David Russek

Mrs. Lynn Sabol, Principal

Mr. Mark Scarbinsky*

Mrs. Mildred Scarbinsky

Rev. Jason Stokes*

Mrs. Kim Sutter

Dr. Joseph Zawisza*

Rev. Msgr. Edward Zemanik*

**Nativity Governance Board Member*



Preserving a Legacy of Faith & Family



A Catholic Presence

Preserving a Legacy of Faith & Family

Since 1927, there has been a dedicated secondary Catholic education presence in Schuylkill County. In that year, Father Edward L. Gatens, pastor of Saint Patrick Church, planned the building of Pottsville Catholic High School which was dedicated on October 15, 1927. The constantly increasing enrollment through the decades made a new building essential and Lawtons Hill was selected as the site for the new Catholic high school, Nativity BVM, which opened in September 1955.

As the primary option for secondary Catholic education in the area, it is imperative that Nativity BVM continue to thrive. A Nativity education places importance on the development of the whole person - mind, body, and spirit. Students are taught to think critically, creatively, and to question the world around them. They are also encouraged to live out their faith and to grow in their relationship with God.



Nativity Preservation Support Foundation

Be Part of the Legacy

The Nativity Preservation Support Foundation (NPSF) was organized by local volunteers, business and professional people within our community who are dedicated to preserving Nativity for all future generations of Schuylkill County. This foundation is a non-profit organization that is an entity separate and apart from the Diocese of Allentown and will be used now and in the future only for the benefit of Nativity.

All monies from the campaign will be placed in a restricted account held by NPSF to be used exclusively for the Preserving a Legacy of Faith & Family campaign priorities. The foundation's website, www.preservenativity.org, can accept Paypal and major credit cards. All checks should be made payable to the foundation.



**We invite you to be a part of the
Legacy of Nativity BVM High School!**

Preserving a Legacy of Faith & Family

Building a Sustainable Future

Nativity's leadership has been diligently evaluating the necessities of our students, staff, faculty, and the broader community to ensure the school's long-term viability. After much prayer and discernment, we are excited to embark on a capital campaign to ensure the long-term success of Nativity through the *Preserving a Legacy of Faith & Family* campaign.

Nativity BVM High School's success is contingent upon a robust student body, a supportive school community, and a fiscally sound operational plan. Our fundraising target is \$5 million which will help to generate the financial resources needed to keep Nativity operating for future generations. The funds raised will be managed by the Nativity Preservation Support Foundation and go towards the following priorities:

Faculty and Staff Development & Retention

Attract, develop and retain the best educational community.

Our faculty and staff provide powerful role models for our students. In order to continue our top-notch instruction, innovative programs, and variety of activities, Nativity will need to offer competitive salaries and benefits that will attract and retain faculty and staff.

Campus Facilities

Update and maintain our campus facilities.

Maintaining and updating the building is crucial for creating a conducive learning environment for students. The financial resources from this campaign will ensure that no maintenance will be deferred, ensuring not only safety, health and learning but also an overall cost savings.

Tuition Assistance

Providing students with a top-quality education at a reasonable cost .

To increase accessibility to a Nativity education, funds from the campaign will be used to keep tuition affordable and to keep increases at a minimum. It is our belief that every young man and woman who desires a Nativity education should receive it, regardless of their economic situation.

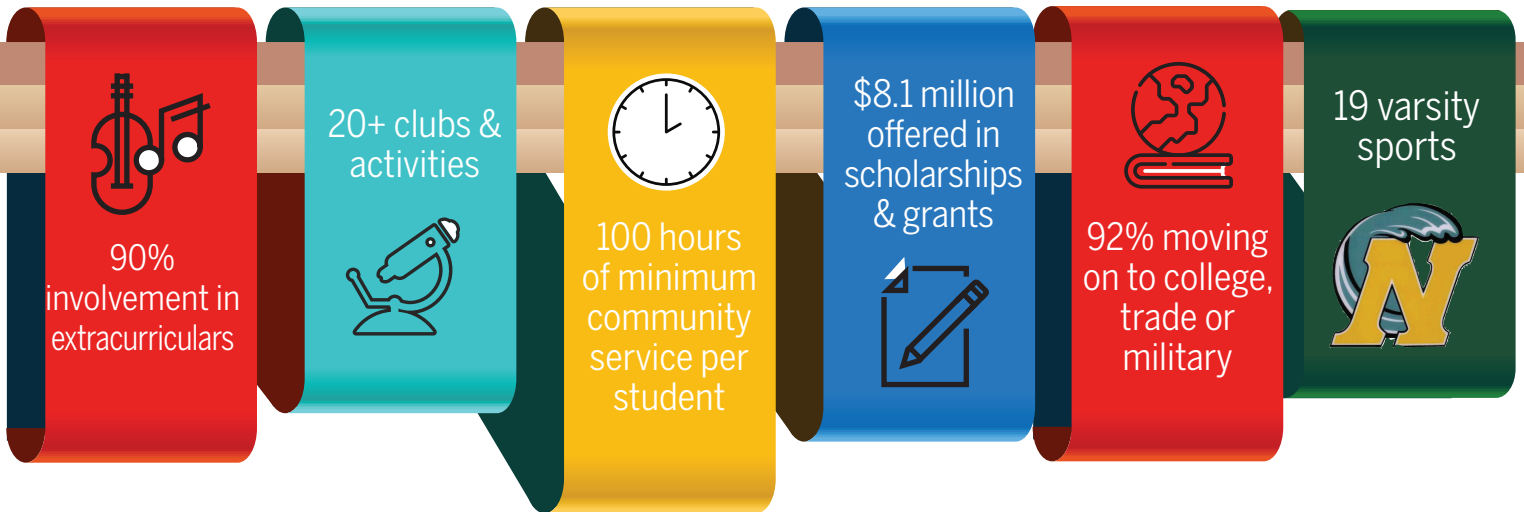
The Preserving a Legacy of Faith & Family campaign will also help Nativity maintain a balanced budget, even during periods of economic uncertainty when other sources of funding may be unavailable.

It is our intention that by the time we conclude the Preserving a Legacy of Faith & Family capital campaign, we will be celebrating 100 years of Catholic Education in Pottsville.



Nativity BVM's Impact

As the primary secondary Catholic educational option in the area, Nativity BVM exemplifies the essentials of academic excellence and affirms the traditional life values of Christianity in Catholic faith. Our student body is made up of students from twelve surrounding school districts, representing diverse ethnic and socio-economic backgrounds. Accredited by the Middle States Association of Colleges and Secondary Schools as well as the Department of Education of the Commonwealth of Pennsylvania, we currently have 20 lay teachers and one priest on the faculty.



Our Mission

Nativity BVM High School is a Christ-centered Catholic school dedicated to meeting the needs of its students and enriching them through formation of faith, outstanding academics, community service, social responsibility, cultural appreciation and athletic development, thereby preparing our graduates to meet all of life's challenges.



Preserving a Legacy of Faith & Family Capital Campaign FAQs

Have questions about Nativity BVM High School's strategic vision and priorities for the future? Below are some of the most frequently asked questions about the Capital Campaign.



Why is the strategic vision important?

Nativity has a compelling story, and one that we need to tell in a way that will motivate alumni, partners, and community members to engage in our vision and its implementation. All institutions need to evolve and grow to stay relevant and sustainable. Our plan is intended to take us from where we are now to where we want to be in a way that is meaningful and direct enough for community members to easily understand our direction and the role they play in it.

What is the purpose of the *Preserving a Legacy of Faith & Family* Capital Campaign?

This campaign is a crucial initiative that aims to secure the long-term sustainability of our Nativity. With its ambitious fundraising goal of \$5 million, the campaign seeks to generate financial resources that will help the school remain sustainable for generations to come. This includes attracting and retaining talented teachers, maintaining our campus facilities and providing a high quality education to our students.

Does this replace the Annual Fund?

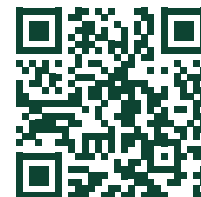
No, the Capital Campaign does not replace our Annual Fund. Instead, the Capital Campaign is "above and beyond;" it is an opportunity to give to the advancement of strategic plan vision. Annual Fund giving supports operational costs, such as existing salaries and programs, utilities, mailing, and any gaps needed to cover students' tuition. The *Preserving a Legacy of Faith & Family* campaign contributions directly support the projects outlined in the campaign literature.

How do I make a Capital Campaign pledge?

Your prayers are so needed throughout this journey! As with all things, begin in prayer. Then, decide the pledge amount that aligns with what you are able to give over a multi-year timeframe. You may give the amount that you pledge in various ways over multiple years (or a one-time gift). Once you have come to a decision, please fill out a Campaign Commitment Form and return it to P.O. Box 82, Pottsville, PA 17901. Extra forms will be available at the school office as well as online at www.preserenativity.org. All gifts will go through the Nativity Preservation Support Foundation and will be used to directly support the campaign.

How do I pay for my campaign pledge?

If you are contributing from your current income or bank savings, gifts can be made by cash, check, or online. Most financial institutions have bill pay services that allow your donations to be sent directly from your bank. Just sign up for your bank's online bill-paying service, and you are halfway there. You can have your campaign gift sent each week, month, quarter, or once for the entire year! Additionally, online giving is an option (bit.ly/nativitybvmcampaign).



Will other types of donations be accepted?

In addition to giving from current income or bank accounts, you can support the campaign in many other ways. Some additional gifting considerations are stocks, bonds, mutual funds, Qualified Charitable Contributions from IRAs (if over 70.5 years of age), appreciated real estate and more. If you are interested in giving in one of these ways, please contact our school office to learn more.

When will my contributions begin?

Your contributions can begin as soon as you would like...we have received several gifts already! Some may choose to give an upfront gift the first year, some may decide to give weekly/monthly/quarterly throughout the campaign, and some give over three years (or more). Regardless of when you choose to start payments, we ask that you return a Campaign Commitment Form so that we can plan for campaign needs.

What can I do to make the campaign meaningful to me?

Stay engaged, get involved! As you learn more about the pillars of our campaign, think about how you can best advocate for our students, alumni, and community. Our Cabinet members are a great resource if you have questions or would like to learn more about why this campaign is so important to Nativity's future. We all need to move in one direction to achieve success!

Who are the Campaign Cabinet Members?

Our Cabinet members are a diverse group of individuals ranging from alumni to parents to business owners and community partners. Many are both!

Mr. Robert Allen*

Rev. Kevin Bobbin, Nativity Chaplain*

Mrs. Carol Boyer

Mr. John Boyer*

Atty. Paul Datte*

Mrs. Jennifer Daubert, Development

Mr. Edward Donahue

Mr. Sonny Fenstermacher*

Ms. Karen Ferenchick, NPSF Treasurer*

Mr. Michael Grabowski, Dean of Students

Mr. William Kirwan, Chairman,
Nativity Governance Board

Mr. PJ Lechleitner

Mrs. Michelle Lewandowski*

Atty. Alvin B. Marshall*

Dr. Augustine (Gus) Moffitt

Mr. Maury Molin

Dr. Jerry Powers

Mrs. Allison Miller Prezelski

Mr. William Reppy*

Rev. Philip Rodgers*

Mr. David Russek

Mrs. Lynn Sabol, Principal

Mr. Mark Scarbinsky*

Mrs. Mildred Scarbinsky

Rev. Jason Stokes*

Mrs. Kim Sutter

Dr. Joseph Zawisza*

Rev. Msgr. Edward Zemanik*

Still Have Questions?

If you have any questions or want to talk about your contribution to the *Preserving a Legacy of Faith & Family* campaign, please contact our campaign manager, Richie Musser, at 484.364.0781 or rmusser@kirbysmith.com. You can also contact the school office at 570.622.8110 or speak to any of the great members of our Campaign Cabinet!



*Nativity Governance Board Member

Nativity BVM High School COMMITMENT FORM



Full Name _____

Spouse Name _____ Maiden Name (if applicable) _____

Street _____

City _____ State _____ Zip _____

Phone _____ Email Address _____

Nativity Connection _____ Parish (if applicable) _____

Name(s) as it/they should appear in recognition materials. Write Anonymous, if applicable. _____

Signature _____ Date _____

LEVELS OF GIVING

- \$50,000+**
Sequere Mariam
- \$25,000 - \$49,999**
Queen of Heaven
- \$10,000 - \$24,999**
Seat of Wisdom
- \$5,000 - \$9,999**
Star of the Sea
- \$2,500 - \$4,999**
Our Lady of Perpetual Help
- \$1,000 - \$2,499**
Mary, Undoer of Knots
- \$500 - \$999**
Our Lady of Knock
- \$1 - \$499**
Our Lady of Guadalupe

THIS IS A: Personal Gift Company Gift Foundation Gift

Gift & Commitments

- I/We agree to contribute \$_____ to Nativity BVM High School
 - Cash/Check Online (bit.ly/nativitybvmcampaign) Other _____

Please make checks payable to Nativity Preservation Support Foundation.
- My/Our contribution will be paid over a period of:
 - 1 Year 2 Years 3 Years Other _____
- I/We will begin giving in _____ / _____ (mo/yr).
- I/We are interested in recognition opportunities. Please contact me/us.

Return form to:

P.O. Box 82
POTTSVILLE, PA 17901
570.622.8110
www.preservenativity.org

Scan to donate

